

# **For Aberdeen's Children**

## **Integrated Children's Services Plan (Interim)**

**2008-09**

# Integrated Children's Services Plan 2008-09 (Interim)

## Contents

1.	Foreword	3
2.	Vision	3
3.	Introduction	4
4.	National Context : Children's Services	4
5.	Local Context : Children's Services	7
6.	Planning Framework for Services for Children and Young People	10
7.	The Position of Children and Young People in Aberdeen	13
8.	Performance Management Framework and Linkages with the Single Outcome Agreement	15
9.	Monitoring and Evaluation	47
	Appendix 1 Key Policy Documents	48
	Appendix 2 List of Consultees	49

## 1. Foreword

Welcome to 'For Aberdeen's Children', Aberdeen's Interim Integrated Children's Services Plan for 2008-09.

The Plan is aligned to the Single Outcome Agreement and feeds into Aberdeen's Community Plan. Advice from the Scottish Government has been to produce an interim one year plan for 2008-09. This Interim Plan sets out our shared vision, strategic priorities and objectives for improving the lives of children and young people in the City for 2008-09 and beyond.

Aberdeen Children and Young People's Strategic Planning Group will oversee the Plan. It is the high level, multi-agency planning group which has the responsibility for the strategic planning and monitoring of services for children and young people, on behalf of the Community Planning Partnership. Membership includes elected members and officers from Aberdeen City Council, NHS Grampian, the Early Years and Childcare Partnership, the Children's Reporter, Careers Scotland, Grampian Police, the Voluntary Sector, the Joint Alcohol and Drugs Action Team and the Youth Justice Strategy Group.

A new 3-year Plan will be developed later this year for 2009-12. Aberdeen City Council and its partners have made a commitment to deliver a number of consultation events between September 2008 and March 2009 to ensure that those who deliver services, those who access services and the communities where services are delivered, are all engaged in developing a new vision and plan 'For Aberdeen's Children' – 2009-12.

## 2. Vision

In 2004-05, Aberdeen City Council and its partners developed a 'vision' for Aberdeen's children. For the duration of the Interim Plan, our shared 'Vision' in Aberdeen remains as follows:

We believe that all children and young people in Aberdeen should enjoy being young. Aberdeen will be a city where children and young people are safe, nurtured, healthy and active; are included, respected and responsible; achieve their full potential; and are supported to participate in decisions that affect them.

Our vision also reflects the UN Convention on the Rights of the Child, embraces international, national and local policies and priorities and is supported by the following commitments:

We will promote and deliver integrated services of the highest quality;

We will ensure that services are accessible to all and promote the rights and responsibilities of those who use them;

We will raise achievement;

We will reduce inequality; and

We will 'Get It Right for Every Child' by ensuring a common, co-ordinated approach across **all** agencies that supports the delivery of appropriate, proportionate and timely help to all children as they need it.

### 3. Introduction

'For Aberdeen's Children', is the 2008-09 Interim Integrated Children's Services Plan for Aberdeen. It follows the 2005-08 Integrated Children's Services Plan and is the overarching document that describes our local objectives and strategies across agencies, for improving services and outcomes for Aberdeen's children and young people.

The Integrated Children's Services Plan is a statutory reporting document, under the Children (Scotland) Act 1995, intended to meet local and other planning requirements. It replaces the separate plans for the following areas of service:

- Statements of Education Local Improvement Objectives (Standards and Quality Report);
- Children's Services Plans for children in need;
- Youth Justice Strategy; and
- Child health elements of Local Health Plans / NHS Priority implementation statements.

This 2008-09 Interim Plan is aligned to the Single Outcome Agreement for the City. It is an electronic plan which will improve performance management and reporting, which continues to be a statutory requirement over and above the Single Outcome Agreement.

### 4. National Context: Children's Services

The **Children (Scotland) Act 1995** is the key legislation concerning the care and welfare of children. The Act brings together aspects of family and childcare law, and amended adoption legislation and is centered on the needs of children and their families. Part I describes the legal rights and responsibilities of parents for their children, and makes provision for resolving disputes about children between family members. Part II describes the arrangements for public services for children in need of protection and support and the arrangement to deal with children's offending. Part III amends aspects of the Adoption (Scotland) Act 1978.

The Act incorporates provisions, which conform to, and in some cases surpass, commitments under the UN Convention on the Rights of the Child. It also takes account of obligations under the European Convention on Human Rights. Essentially, the Act is founded on the principles that each child has a right to be treated as an individual:

- Each child who can form his or her views on matters affecting him or her has the right to express those views if he or she so wishes;
- Parents should normally be responsible for the upbringing of their children and should share that responsibility;
- Each child has the right to protection from all forms of abuse, neglect or exploitation;
- In decisions relating to the protection of a child every effort should be made to keep the child in the family home;
- Any intervention by a public authority in the life of a child should be properly justified and should be supported by services from all relevant agencies working in collaboration;

In support of these principles three main themes run through the Act:

- The welfare of the child is the paramount consideration when his or her needs are considered by courts and children's hearings;

- No court should make an order relating to a child and no children's hearing should make a *supervision requirement* unless the court or hearing considers that to do so would be better for the child than making no order or supervision requirement at all;
- In reaching any major decision which involves fulfilling a parental responsibility or exercising a parental right take the child's views into account when decisions are to be made about his or her future.

In **2001**, the publication of '**For Scotland's Children**' set out the direction for change towards an integrated children's services approach. The "For Scotland's children" (FSC) report was published by the Scottish Executive in October 2001. The report highlights six action points. These are:

- Consider children's services as a single service system;
- Establish a joint Children's Services Plan;
- Ensure inclusive access for all children to universal services;
- Co-ordinate needs assessment;
- Co-ordinate intervention;
- Target services to meet needs and reduce inequalities.

These points are directed at local authorities, health boards, and voluntary organisations, and set out a range of ways in which they should work together to achieve better integrated children's services. The "For Scotland's children" Action Plan requires service providers to think holistically, to see themselves as part of a broader Children's Services Team and to work together in the best interests of the child in the context of the family and the community.

In June 2005, the Scottish Executive published '**Getting It Right for Every Child – Proposals for Action**', setting out the reform programme for Children's Services in Scotland. The document sets out the requirements of the Scottish Executive, local authorities and partner agencies for practice change, legislative change and the removal of barriers to implementation. It also includes the timetable for the implementation of 'Getting It Right for Every Child'. The 'Proposals for Action' build upon the key principles set out within the 'Children's (Scotland) Act 1995, and the Ministerial 'Vision Statement', as outlined in 'For Scotland's Children (2001)'.

The 'Getting It Right for Every Child' programme is founded on the principles of early intervention, that is, appropriate, proportionate and timely intervention and provides a framework for putting them into action for all children and young people at an individual level.

The key aims of 'Getting It Right for Every Child' are:

- To ensure that all services are child centred;
- That children get the help they need when they need it;
- That responses to meet needs are timely, appropriate and proportionate;
- That action must improve the outcomes for the child;
- That the capacity of families and communities to meet the needs of children is strengthened;
- Integrated assessment and planning for children that engages and responds to children, families and key professionals;
- Practitioners are enabled to spend more time with children and families.

Getting it Right for Every Child will connect to the new Early Years Framework, Curriculum for Excellence and the More Choices, More Chances agenda with the aim of improving outcomes for all children and young people.

In November 2007, the Scottish Government and COSLA signed a Concordat which set out a package of measures and new ways of funding and reporting. The Government has set out its work programme under 5 Strategic Objectives:

- Wealthier and fairer
- Smarter
- Healthier
- Safer and Stronger
- Greener.

The Concordat lists 15 National Outcomes and 45 National Indicators and Targets.

There are 3 National Outcomes that relate specifically to children and young people:

- Our children have the best start in life and are ready to succeed.
- Our young people are successful learners, confident individuals, effective contributors and responsible citizens.
- We have improved life chances for children, young people and families at risk.

The contribution of policies for children and young people is not limited to these outcomes. They will also contribute to all other of the outcomes, in particular:

- We realise our full economic potential with more and better employment opportunities for all.
- We are better educated, more skilled and more successful, renowned for our research and innovation.
- We live longer, healthier lives.
- We have tackled the significant inequalities in Scottish society.
- We live our lives safe from crime, disorder and danger.
- We have strong, resilient and supportive communities where people take responsibility for their own actions and how they affect others.
- We take pride in a strong, fair and inclusive national identity.
- Our public services are of high quality, continually improving, efficient and responsive to local people's needs.

The Concordat sets out the terms of a new relationship based on delivering improved outcomes in partnership. It requires each local authority to prepare a **Single Outcome Agreement (SOA)** with the Scottish Government, based on the direction of policy expressed by the Government through a number of national outcomes that the public sector in Scotland will be expected to achieve. Under this direction provided by the Scottish Government, the purpose of the Single Outcome Agreement is to identify priority outcomes for the people of Aberdeen and set out targets to maintain and improve those outcomes through specific commitments made by the Scottish Government and Aberdeen's Community Planning Partners.

The Single Outcome Agreement covers the services provided by Aberdeen City's undernoted Community Planning partners:

Aberdeen City Council;  
Grampian Fire & Rescue Service;  
Grampian Police;  
NHS Grampian;

Scottish Enterprise Grampian;  
NESTRANS.

These services include those delivered by or with agencies, businesses, the Voluntary Sector and other partners.

The Agreement builds on the City's first Community Plan of 2001, which established priority outcomes for the City, following a City wide consultation exercise. The improved outcomes targeted through the first Community Plan have been mostly achieved and this agreement represents the next stage in delivering better services and better outcomes for the people of Aberdeen.

## 5. Local Context: Children's Services

In April 2007, the final Inspection Report from Grampian Substance Misuse Services was published by HMle. Aberdeen City Substance Misuse Services were measured against the HMle Inspection Framework and the following evaluation ratings were indicated:

	Area of Evaluation	Rating
I	Impact of people who use services and other stakeholders	Adequate
II	Key processes	Adequate
III	Strategic Management and Leadership	Weak
IV	Partnership Working	Weak
V	Capacity for Improvement	Adequate

Recommendation 10 of the Report states that 'Aberdeen City Council should review the level and role of its specialist substance misuse social work service in the context of a review of the balance of substance misuse services across the city'. This recommendation should also include Children's Services Social Work as it related to services to support children and families affected by drug misuse as part of a 'wrap around care' approach within community settings.

In May 2007, the Liberal Democrat and SNP published their Programme for Aberdeen City Council. The partnership agreement sets out the policies that will deliver both Aberdeen's City Vision, to be "a city which is vibrant, dynamic, forward looking – an even better place to live and work, where people can expect high-quality services that meet their needs", and the City Council's Vision that "we will be recognised within the city and more widely, as being a leading Council in Northern Europe by 2010".

In October 2007, the Council supported the recommendations of the Transformation for Children and Young Peoples Services. These support a fundamental review of the local authorities contribution to key service delivery areas across early years, primary and secondary education, looked after children, children's transport and services for young people with social, emotional and behavioural needs. The Council are committed to delivering on the key recommendations and ensuring continued engagement across areas where an integrated approach to service review is required to achieve improved outcomes for children and young people. The Transformation Programme is set within the wider context of integrated planning in Aberdeen.

Through the Transformation Programme, Aberdeen City Council will demonstrate its commitment to improve local services to ensure we meet the needs of children, young people and their families. This approach will deliver progress towards achieving better outcomes for children and young people and a sustainable budget position by 2011.

The key drivers for change are to:

- Deliver improved outcomes for children, young people and their families;
- Implement the Integrated Assessment Framework and the Single Plan;
- Strengthen the Council's capacity for improvement and deliver services within a sustainable budget position to achieve Best Value;
- Provide a clear strategic leadership and direction for health and care provision as part of a wider integrated children's service;
- Improve the delivery of key processes through effective and efficient governance arrangements across service areas North, Central and South;
- In partnership with operational managers and key stakeholders, develop robust policies and guidance to enable effective and accountable management of services that meet national and corporate standards; and
- Enable service users, staff and key stakeholders to effectively engage in the planning and self-evaluation of services.

That will ultimately lead to improvements in the key inspection areas:

- Outcomes for people who use services;
- Impact on people who use services;
- Impact on staff;
- Impact on the community.

In April 2008, the final draft of the SWIA Performance Inspection for Aberdeen City Council was presented to the authority. Health and Care Services were measured against the HMIE Inspection Framework and the following evaluation ratings were set out:

	<b>Area of Evaluation</b>	<b>Rating</b>
I	Key outcomes for people who use the services	Weak
II	Impact on people who use services	Adequate
III	Impact on staff	Weak
IV	Impact on community	Adequate
V	Delivery of key processes	Weak
VI	Policy and service development, planning and performance management	Weak
VII	Management and support to staff	Adequate
VII I	Resources and capacity building	Unsatisfactory
IX	Leadership and direction	Unsatisfactory
X	Capacity for improvement	Weak

The SWIA report contains 32 recommendations across 7 of the 10 key evaluation areas.

These include:

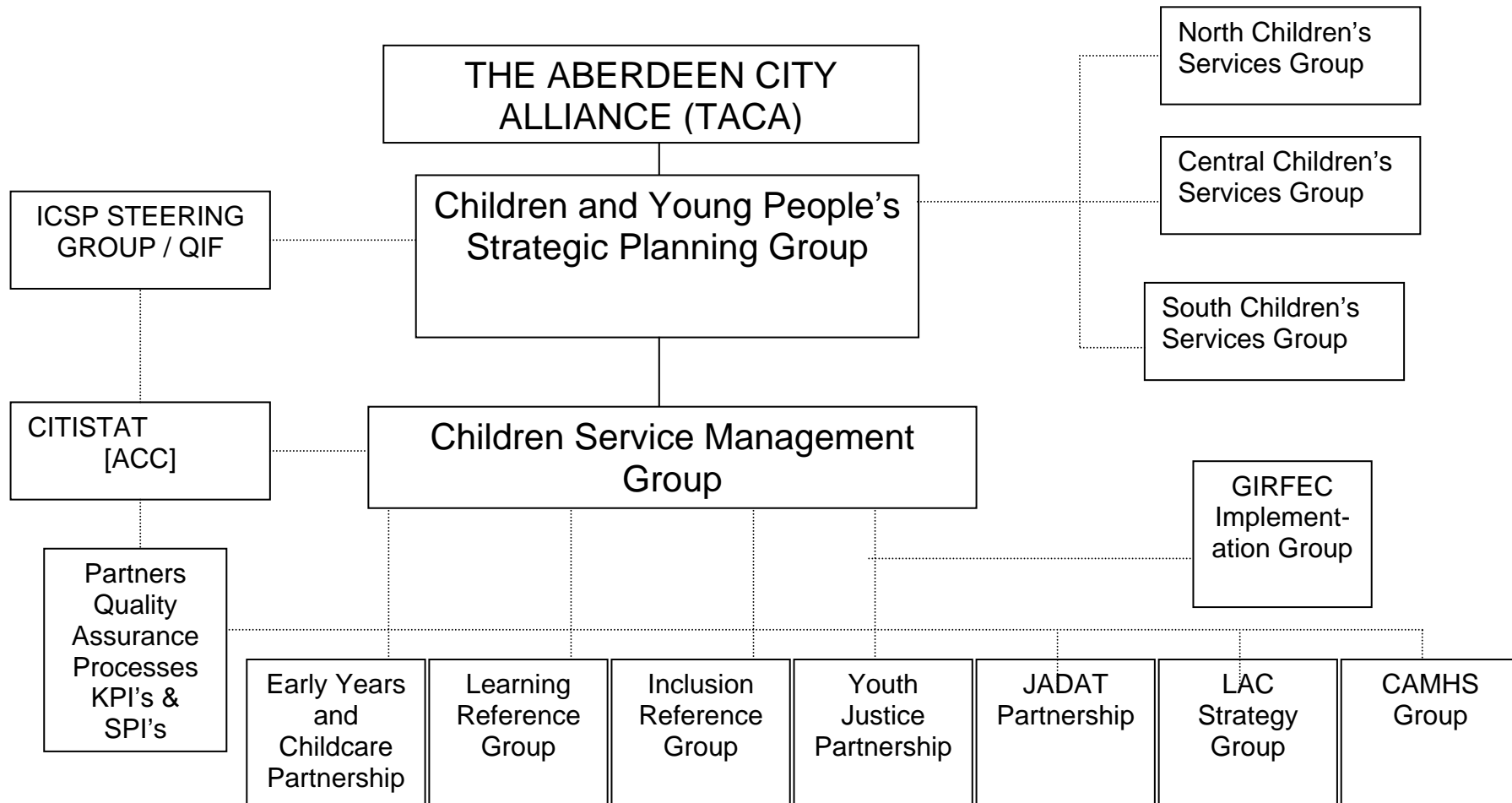
- Health and care Services should review services for children with disabilities. This should include developing a plan for transitions which improves outcomes for those moving into adult services.

- Health and care services should produce and effectively implement a plan to reduce the number of children who are placed out of the city. This should include re-evaluation of the targets for increasing foster care placements within the city.
- Health and care Services should improve outcomes for those who use services. Service developments should be effectively linked to these improvements and monitoring systems put in place.
- Health and care Services should ensure that plans are developed to integrate front line services where they will improve outcomes for service users.
- Health and care Services should ensure that managers and staff understand the purpose of any monitoring framework, including citistat. There should be an inclusive process for involving them in decisions about its focus and content, in order to improve outcomes.

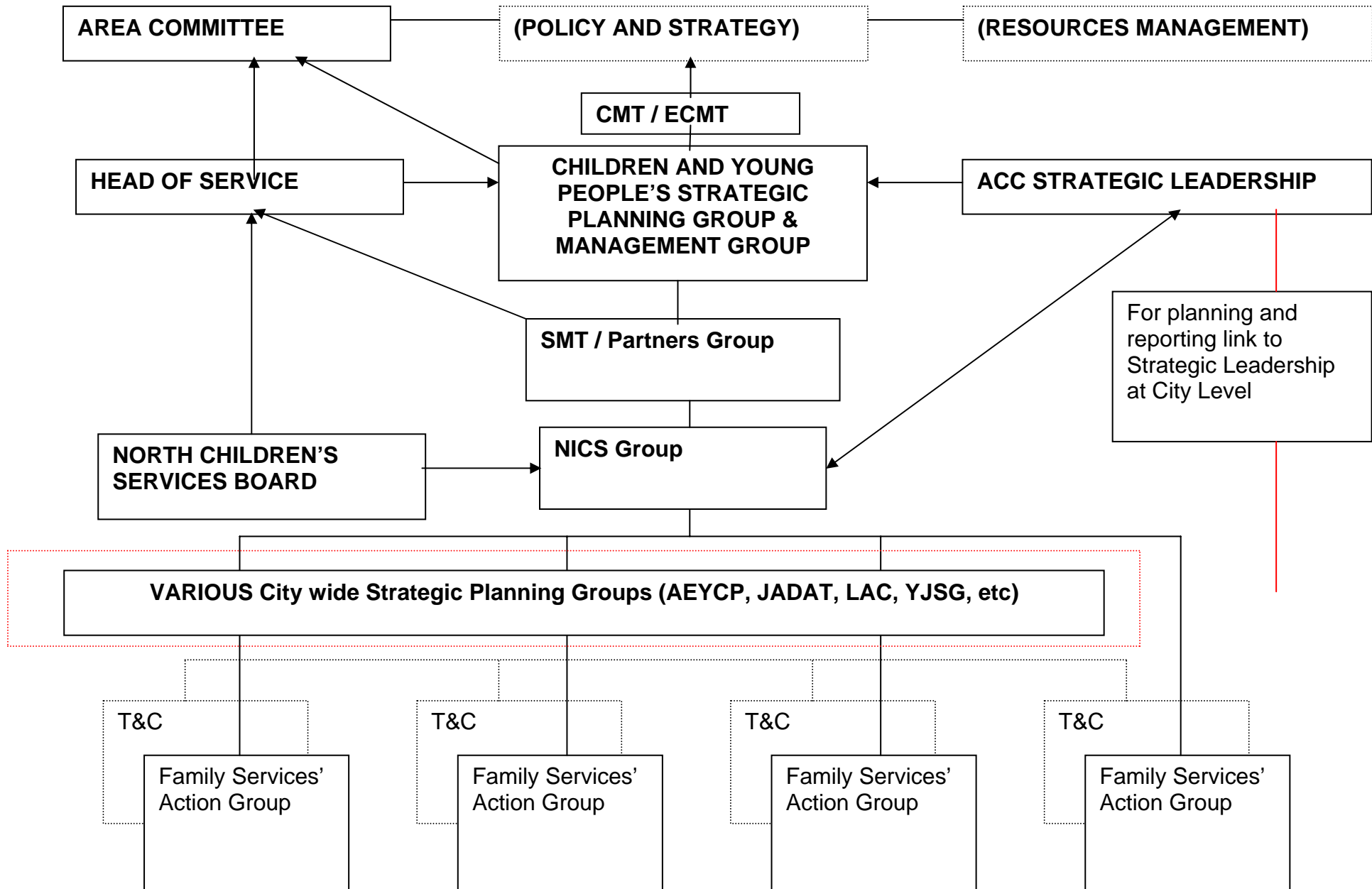
In May 2008, the Accounts Commission published the report 'Audit of Best Value and Community Planning: Aberdeen City'. The Commission, on consideration of a report by the Controller of Audit on the Audit of Best Value and Community Planning, made a decision to hold a Public Hearing in Aberdeen City. The Commission recommended a number of key actions to improve leadership, structure, governance and financial scrutiny to ensure the Council and its partners can demonstrate effective outcomes for children, young people and their families and achieve Best Value for the citizens of Aberdeen.

## 6. The Planning Framework for Services for Children and Young People

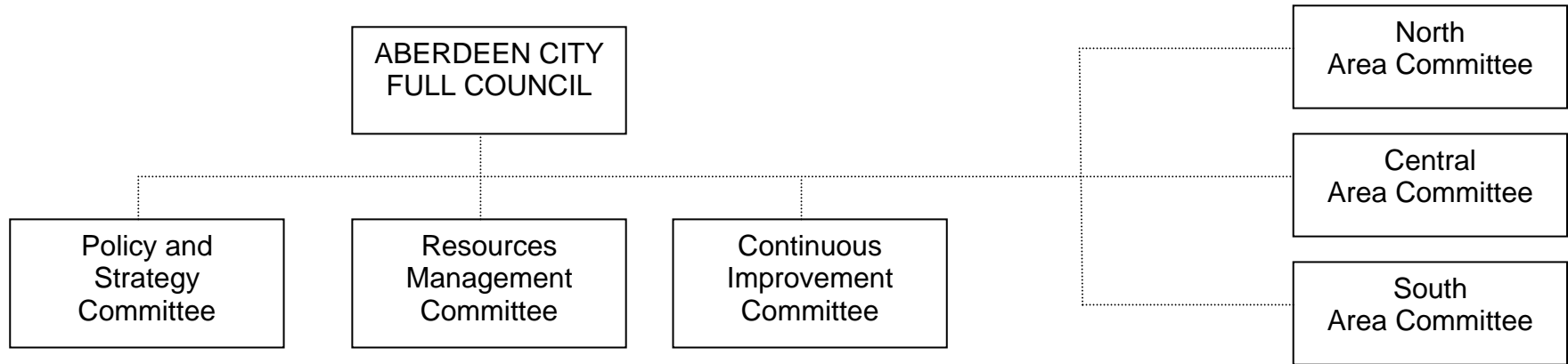
### STRATEGIC PLANNING STRUCTURES



## NEIGHBOURHOOD STRUCTURES (NORTH EXAMPLE)



## ABERDEEN CITY COUNCIL COMMITTEE STRUCTURE



## **7. The Position of Children and Young People in Aberdeen**

The fourth Audit of Aberdeen's Children and Young People, commissioned by Aberdeen Early Years and Childcare Partnership on behalf of Aberdeen's Children and Young People Strategic Planning Group, was published in 2007. Its purpose is to examine the characteristics of the 0-25 year population and outline the demand for services.

It reveals the following information:

### **Background**

- There are 64,800 people in Aberdeen aged 0-25, almost a third of the total population.
- There are approximately 32,655 children (aged 0-15), of which 9,956 are of pre-school age, and 32,145 young people (aged 16-25).
- In the period from 2003 to 2021, the 0-25 population is forecast to fall by almost 5,000.
- Middlefield, Cummings Park and Kingswells neighbourhoods have the highest proportions of children (aged 0-15).
- Old Aberdeen, Froghall, Powis and Sunnybank and George Street neighbourhoods have the highest proportions of young people (aged 16-25).
- Hanover neighbourhood has the lowest proportion of children and Braeside, Mannofield, Broomhill and Seafield has the lowest proportion of young people.
- Almost a quarter of households in Aberdeen contain children.
- Single parent households account for 4% of all households in Aberdeen.
- There has been a significant increase in the number of migrant workers in recent years.
- Almost a quarter of households in Aberdeen have an annual income of £10,000 or less.

### **Wealthier and Fairer**

- 6,839 people aged 0-25 live in the most deprived areas of Aberdeen.
- In August 2006, there were 2,265 benefit claimants in Aberdeen aged under 25.
- There were 550 unemployed claimants aged under 25 years in January 2007.
- In February 2007, 17% of primary school pupils and 11% of secondary school pupils in Aberdeen were entitled to free school meals. In 2005-06 there were 4,218 clothing grant awards to pupils in Aberdeen, an increase on the previous year.
- Over 1,000 pupils in Aberdeen have a Record of Needs and/or an Individualised Educational Programme.
- The English as an Additional Language Service knows of over 1,100 children whose mother tongue is not English.

### **Safer and Stronger**

- As at 31 March 2007, there were 142 children on the Child Protection Register, equivalent to 4.3 per 1,000 population aged 0-15. This was 17 less than March 2006 and 5 less than March 2005.
- 588 children were being looked after by the local authority, 86% in a community setting and 14% in residential accommodation.
- 1,900 households made an application for assistance under the Homeless Persons legislation in 2005-06. Of these, 313 had dependent children.

- In 2006, Domestic Abuse Support Workers from Aberdeen City Council supported 219 female clients, 126 of whom had children.
- In 2006, 97 accommodated young people were reported missing on one or more occasions.
- Out of a total of 6,839 convictions in Aberdeen during 2005-06, 1,097 (16%) were committed by people under 21 years of age.
- There were 54 persistent young offenders, who committed 500 offences in 2005-06.
- The most common type of offence by young people is vandalism, followed by breach of the peace and dishonesty.

## **Healthier**

- 58% of 5-year old children in Aberdeen have no obvious tooth decay; however, the situation varies greatly across the city.
- The percentage of P1 children in Aberdeen that were overweight or obese declined between 1998-98 and 2001-02.
- The percentage of low birthweight babies increased during the 10-year period from 1 April 1995 to 31 March 2004. Six of the ten wards in the NHS Grampian area with the highest incidence of low birthweight babies were in Aberdeen.
- Middlefield, Tillydrone and Torry neighbourhoods had the highest smoking rates among pregnant women.
- Between 2000-01 and 2005-06, 10% of new born babies delivered in Aberdeen were to women aged 19 and under. In Tillydrone, almost a third of all deliveries were to teenage mothers.

## **Smarter**

- At the time of the School Census in September 2007, there were 12,285 pupils attending mainstream local authority primary schools in Aberdeen and a further 9,917 attending secondary schools. In addition, there were 287 children attending special schools in Aberdeen. It is estimated that a further 2,800 children in Aberdeen attend independent schools – 1,152 at primary level and 1,677 at secondary level.
- There are 49 primary schools in Aberdeen and 12 secondary schools in Aberdeen, run by Aberdeen City Council.
- There are 48 school nurseries in Aberdeen run by Aberdeen City Council, mostly providing part-time pre-school education.
- The Council is in partnership with a further 55 registered pre-school centres for the provision of pre-school education.
- 42 private nurseries provide over 1,800 places.
- 6 workplace nurseries provide over 237 places.
- 8 family centres provide 207 places.
- 32 crèches provide 528 places.
- 47 after school clubs provide almost 1,400 places.
- 29 breakfast clubs provide over 600 places.
- 30 playgroups provide almost 600 places.
- 204 childminders provide almost 1,300 places.
- 75 holiday playschemes provide over 2,400 places.
- 8 private independent nursery schools offer almost 500 places.

## 8. Performance Management Framework and Linkages with the Single Outcome Agreement

### Wealthier and Fairer

All Local Outcomes and Indicators highlighted in **red** are linked directly to the Single Outcome Agreement.

All Local Outcomes and Indicators highlighted in **bold** are linked to the Quality Improvement Framework.

Please note that any expenditure relating to the implementation of this Plan will be met from within existing ACC budget levels. Additional expenditure in relation to the implementation of this Plan will require formal approval and further reports to Committee.

<u>National Priorities</u>	<u>Strategic Priority for the City</u>
<ul style="list-style-type: none"><li>• Getting it Right for Every Child</li><li>• Closing the Gap</li><li>• More Choices, More Chances</li></ul>	<ul style="list-style-type: none"><li>• Making improvements to pupil attainment and adult literacy and numeracy through family learning and promoting lifelong learning.</li></ul>

National Outcome	Local Outcome	Relevant Indicators	Frequency / Type / Source	Baseline 2006-07	Local Targets & Timescales
2. We realise our full economic potential with more and better employment opportunities for all.	<b>2.1 Aberdeen will have high quality employment opportunities for citizens (VD&amp;FL).</b>	<b>(Affordable, accessible, quality) Childcare places across all sectors.</b>	Annual / ACC / Family Information Service	9577	10% Increase 2007-08
	<b>2.2 Children, young people and families have access to high quality services when required and are assisted to overcome the social, educational, physical, environmental and economic barriers that create inequality. (INCLUDED)</b>	<b>A local target for getting parents into work by tackling childcare barriers in disadvantaged areas.</b>	Aberdeen Early Years and Childcare Partnership / Family Information Service	<u>Baseline 2007-08</u>	<u>Target 2008-09</u>
		<b>Out of school care provision is available in every neighbourhood to parents who need it.</b>		F/T Employment: 116 P/T Employment: 133 Accredited Education / Training: 38 Total: 287	F/T Employment: 125 P/T Employment: 150 Accredited Education / Training: 45 Total: 320
			<u>Baseline 2006-07</u>	By March 2009: 3 new provisions across the city; retain current level of childminders in the city at 164; and realign out of school provision to match with Schools Estate Strategy.	
			3 new Breakfast Clubs 2 new Out of School Care Clubs 10 new Childminders		

**Required Actions / Commitment by local partners to achieve these outcomes:**

1. Implement local “More Choices, More Chances” Action Plan.
2. Early Years and Childcare Partnership expansion targets.
3. Delivery of multi-sector projects to tackle childhood poverty across communities in Aberdeen.

**This section will be further developed in the new 2009-12 Integrated Children’s Services Plan.**

## Smarter

All Local Outcomes and Indicators highlighted in **red** are linked directly to the Single Outcome Agreement.

All Local Outcomes and Indicators highlighted in **bold** are linked to the Quality Improvement Framework.

Please note that any expenditure relating to the implementation of this Plan will be met from within existing ACC budget levels. Additional expenditure in relation to the implementation of this Plan will require formal approval and further reports to Committee.

<u>National Priorities</u>	<u>Strategic Priorities for the City</u>
<ul style="list-style-type: none"> <li>• Getting it Right for Every Child</li> <li>• Curriculum for Excellence</li> <li>• More Choices, More Chances</li> <li>• Early Years and Early Intervention</li> </ul>	<ul style="list-style-type: none"> <li>• Getting It Right for Every Child</li> <li>• Making improvements to pupil attainment and adult literacy and numeracy through family learning and promoting lifelong learning.</li> <li>• Children – Healthy minds and bodies</li> <li>• Transport and Connections – improve sustainable travel options</li> </ul>

National Outcome	Local Outcome	Relevant Indicators	Frequency / Type / Source	Baseline 2006-07	Local Targets & Timescales
3. We are better educated, more skilled and more successful, renowned for our research and innovation.	<b>3.1 Ensure education is appropriate to pupils' needs and ensure pupils leave school with skills essential for living (VD&amp;FL).</b>	<b>% school leavers in NEET Category (Not in Employment, Education, Training) (To be shown for equalities groups).</b>	Annual / VD&FL CSF / Aberdeen City Council.	6.8% (of the local 16-19 population)  (in 2006 Aberdeen City had the 9 <sup>th</sup> lowest rate of NEET amongst the 32 Scottish Local Authorities).	6% by 2011

National Outcome	Local Outcome	Relevant Indicators	Frequency / Type / Source	Baseline 2006-07	Local Targets & Timescales
		<b>% school leavers entering higher education (To be shown for equalities groups).</b>	Annual / School Leaver destination / Careers Scotland.	33.7%	35% by 2010
		<b>% of 16-19 year olds moving to positive destinations including education training and employment for (a) all; (b) from low income families; (c) young carers; and (d) looked after children has increased.</b>	Annual / School Leaver destination / Careers Scotland.	(a) 12.2%	(a) 10.5%
		Increase Transition opportunities for young people with disabilities.	To be developed and / or counted for the new 2009-12 Integrated Children's Services Plan.		

National Outcome	Local Outcome	Relevant Indicators	Frequency / Type / Source	Baseline 2006-07	Local Targets & Timescales
	<b>3.2 Encourage and support people of all ages to take an active part in their own learning (Community Learning &amp; Development Strategy).</b>	<b>Number of adults successfully completing classes targeted at improving literacy and numeracy.</b>  (A national Adult Literacy and Numeracy in Scotland survey is currently being developed by the Scottish Government with the anticipated first results available in mid 2009).	Annual / National Menu / Aberdeen City Council.	1,938	tbc
4. Our young people are successful learners, confident individuals, effective contributors and responsible citizens.	<b>4.1 Improve attainment across city schools (VD&amp;FL).</b>	<b>The level of attendance at school has increased.</b>	To be developed and / or counted for the new 2009-12 Integrated Children's Services Plan.		
		<b><u>Primary 5-14</u></b> <b>Reading</b> <b>Maths</b> <b>Writing</b>  <b><u>Secondary 5-14</u></b> <b>Reading</b> <b>Maths</b> <b>Writing</b>  <b>(To be shown for equalities groups).</b>	Termly / VD&FL CSF / Aberdeen City Council.	<b><u>Primary</u></b> Reading = 79% Maths = 82% Writing = 72%  <b><u>Secondary</u></b> Reading = 63% Maths = 52% Writing = 50%	<b><u>Primary - 2011</u></b> Reading = 87% Maths = 90.4% Writing = 79.1%  <b><u>Secondary - 2011</u></b> Reading = 74.5% Maths = 69% Writing = 55.3%

National Outcome	Local Outcome	Relevant Indicators	Frequency / Type / Source	Baseline 2006-07	Local Targets & Timescales
		<b>Cumulative attainment of National Qualifications by all pupils in publicly funded secondary schools for S4.</b>	Annual / National Menu / Aberdeen City Council.	<u>English and Maths at SCQF level 3</u> 92%  <u>5+ Awards at SCQF level 3</u> 88%  <u>5+ Awards at SCQF level 4</u> 71%  <u>5+ Awards at SCQF level 5</u> 32%	2007-08 95% 2008-09 96% 2009-10 97%  2007-08 tbc 2008-09 tbc 2009-10 tbc  2007-08 tbc 2008-09 tbc 2009-10 tbc  2007-08 36.4% 2008-09 37.2% 2009-10 37.9%
		<b>Cumulative attainment of National Qualifications by all pupils in publicly funded secondary schools for S5.</b>	Annual / National Menu / Aberdeen City Council.	<u>5+ Awards at SCQF level 5</u> 46%  <u>1+ Awards at SCQF level 6</u> 39%  <u>3+ Awards at SCQF level 6</u> 24%	2007-08 46% 2008-09 47% 2009-10 48%  2007-08 tbc 2008-09 tbc 2009-10 tbc  2007-08 tbc 2008-09 tbc 2009-10 tbc

National Outcome	Local Outcome	Relevant Indicators	Frequency / Type / Source	Baseline 2006-07	Local Targets & Timescales
		<b>Cumulative attainment of National Qualifications by all pupils in publicly funded secondary schools for S6.</b>	Annual / National Menu / Aberdeen City Council.	<u>3+ Awards at SCQF level 6</u> 30%  <u>5+ Awards at SCQF level 6</u> 20%  <u>1+ Awards at SCQF level 7</u> 14%	2007-08 tbc 2008-09 tbc 2009-10 tbc  2007-08 tbc 2008-09 tbc 2009-10 tbc  2007-08 tbc 2008-09 tbc 2009-10 tbc
		<b>Young people in compulsory school education participate in enterprise in education activities on an annual basis.</b>	To be developed and / or counted for the new 2009-12 Integrated Children's Services Plan.		
		<b>The participation of school age children in leisure, cultural, learning and physical activities, outside the core curriculum has increased.</b>	To be developed and / or counted for the new 2009-12 Integrated Children's Services Plan.		
		<b>All schools are health promoting.</b>	To be developed and / or counted for the new 2009-12 Integrated Children's Services Plan.		
		<b>The proportion of schools receiving positive inspection reports.</b>	Annual / National Menu / Aberdeen City Council.	80%	90% by 2011

National Outcome	Local Outcome	Relevant Indicators	Frequency / Type / Source	Baseline 2006-07	Local Targets & Timescales
	<b>4.2 We will engage young people to facilitate their personal, social and educational development and enabling them to gain a voice, influence and place in society (Policy Priorities for Community Learning).</b>	<b>Numbers of young people gaining Achievement Awards levelled against the Scottish Credit and Qualification Framework.</b>	Annual / Figures for Duke of Edinburgh Scheme, Youth Achievement Awards, Dynamic Youth and ASDAN Awards / Aberdeen City Council.	<u>DOE</u> 13 <u>Youth Achievement</u> 21 (07-08) <u>Dynamic Youth</u> 8 (07-08) <u>ASDAN Awards</u> tbc	<u>DOE</u> tbc <u>Youth Achievement</u> 60 (08-09) <u>Dynamic Youth</u> 20 (08-09) <u>ASDAN Awards</u> tbc
		<b>Number of young people involved in Fairer Scotland Fund initiatives.</b>	FSF annual monitoring report.	6533  Under 16 – 5272 16-25 – 1261	10% increase per year
		<b>The number of young people volunteering has increased.</b>	To be developed and / or counted for the new 2009-12 Integrated Children's Services Plan.		

National Outcome	Local Outcome	Relevant Indicators	Frequency / Type / Source	Baseline 2006-07	Local Targets & Timescales
5. Our children have the best start in life and are ready to succeed.	<b>5.1 Improve the healthy development of young children and their families, particularly those children most at risk (National Priority for Health Improvement).</b>	<b>The % of pre-school education centres and nurseries that receive :-</b> <ul style="list-style-type: none"> <li>• 4, 5, and 6 point Care Commission grading scale; and</li> <li>• a good/very good HMIE report.</li> </ul> <p>(The Care Commission is to introduce a grading scheme in 2008. Data available from that point.)</p>	Annual / National Menu / Care Commission & HMIE Inspection / Aberdeen City Council .	tbc	tbc
		<b>% of pre-school and ante pre-school children in part time nursery provision.</b>	Annual / local / Aberdeen City Council.	Anti = 88.5% Pre = 94.9%	tbc
		<b>Number of children (aged 0-15) dependent on a recipient of income support and job seekers allowance.</b>	Annual / National Menu and Fairer Scotland Fund Annual Report.	tbc	tbc

## **Required Actions / Commitment by local partners to achieve these outcomes:**

1. Implement A Curriculum for Excellence.
2. Implement local "More Choices, More Chances" Action Plan encouraging young women and men to try non-traditional subject choices and careers.
3. Grampian Police (GP) are committed to promoting their Police Cadet scheme to encourage and provide opportunities for young people to join Grampian Police and enhance their development (GP).
4. Establish a network of community learning hubs across the city (VD&FL).
5. Provide a range of community based adult learning activities in targeted areas.
6. Deliver adult and family learning in targeted areas.
7. Ensure expenditure on education delivers maximum benefit to pupils' education (VD&FL).
8. Continue to involve parents and pupils in their schools (VD&FL).
9. Ensure Aberdeen's teachers receive appropriate training and CPD to deliver the best quality education (VD&FL).
10. Review best teaching practice and trial projects in Aberdeen and beyond to identify the best ways of delivering an even higher quality education to all pupils (VD&FL).
11. Identify, from current resources, any that can be allocated to support for learning, targeted to areas of greatest need (VD&FL).
12. Continue to support the joint funded Health Improvement Officer posts in schools.
13. Make greater provision within the city for young people with additional needs to avoid placements outwith the city (VD&FL).
14. Build on successful early intervention programmes (Closing the Gap in Educational Attainment Report 2007).
15. Take forward key aspects of A Curriculum for Excellence relating to school and post school transitions (Closing the Gap in Educational Attainment Report 2007).
16. Move all City schools to Health Promoting School.
17. Promote participation in Aberdeen Youth Action Committee and other local forums including Youth Forums and Student Forums (ACC & GP).
18. Ensure opportunities for young people to gain achievement awards levelled against the Scottish Credit Qualification Framework (SCQF).
19. Pre-school Partner providers to work with Aberdeen City Council to raise standards of pre-school education.

**This section will be further developed in the new 2009-12 Integrated Children's Services Plan.**

## Healthier

All Local Outcomes and Indicators highlighted in **red** are linked directly to the Single Outcome Agreement.

All Local Outcomes and Indicators highlighted in **bold** are linked to the Quality Improvement Framework.

Please note that any expenditure relating to the implementation of this Plan will be met from within existing ACC budget levels. Additional expenditure in relation to the implementation of this Plan will require formal approval and further reports to Committee.

<u>National Priorities</u>	<u>Strategic Priorities for the City</u>
<ul style="list-style-type: none"> <li>• Getting it Right for Every Child</li> <li>• Health for all Children (Hall4)</li> <li>• Equally Well</li> <li>• Early Years and Early Intervention</li> </ul>	<ul style="list-style-type: none"> <li>• Getting It Right for Every Child</li> <li>• Children – Healthy minds and bodies</li> <li>• Regeneration – Improving the quality of life in our most deprived areas</li> <li>• Transport and Connections – improve sustainable travel options</li> </ul>

National Outcome	Local Outcome	Relevant Indicators	Frequency / Type / Source	Baseline 2006-07	Local Targets & Timescales
5. Our children have the best start in life and are ready to succeed.	<b>5.1 Improve the healthy development of young children and their families,</b>	<b>Proportion of newborn children exclusively breastfed at 6-8 weeks.</b>	Annual / NES JPSG CSF / NHS Grampian (HEAT Measure).	33.0% (Grampian) March 2007	41.2% by 2010-11 (Grampian) (City figures to be determined)

National Outcome	Local Outcome	Relevant Indicators	Frequency / Type / Source	Baseline 2006-07	Local Targets & Timescales
		<b>Three to five year old children registered with an NHS dentist.</b>	Annual / NES JPSG CSF / NHS Grampian (HEAT Measure).	June 2007 58.9% Grampian	80% by 2010-11 (Grampian) (City figures to be determined)
		<b>By 2010 60% of children a) at age 5 and b) 11-12 year olds have no sign of dental disease.</b>	Annual / NES JPSG CSF / NHS Grampian (HEAT Measure).	tbc	tbc
		<b>Completion rates for child healthy weight intervention programme (5- 15 year olds and their families).</b>	Annual / NES JPSG CSF / NHS Grampian (HEAT Measure).	tbc	2040 Cumulative total NHS Grampian
		<b>Numbers and percentage of children walking or cycling to school.</b>	Annual / National Menu / Aberdeen City Council – Hands Up School Travel Survey.	<u>Walking and Cycling</u> 65.3% <u>Car or Van passenger</u> 22.3%	Reduce %age of pupils driven to school by at least 10% by 2012, compared to 2007 baseline
		<b>Percentage of children eating more healthily, with at least 5 or more portions of fruit and vegetables daily is increasing.</b>	To be developed and / or counted for the new 2009-12 Integrated Children's Services Plan.		
		<b>Pregnancies among 13-15 year olds, per 1000 population.</b>	Annual / National Menu / NHS Grampian.	<u>2005</u> 5.6 per 1,000 population (Grampian)	tbc Already below national 2010 target

National Outcome	Local Outcome	Relevant Indicators	Frequency / Type / Source	Baseline 2006-07	Local Targets & Timescales
		<b>The number of children and young people voluntarily attending health check-ups and assessments, when they need them, has increased.</b>	To be developed and / or counted for the new 2009-12 Integrated Children's Services Plan.		
		<b>Meeting local targets for the percentage of children and young people with autism, ADHD and for looked after children seen within the local target waiting time for community CAMHS and specialist teams.</b>	To be developed and / or counted for the new 2009-12 Integrated Children's Services Plan.		
6. We live longer, healthier lives.	<b>6.1 Work towards a position where people in Aberdeen experience health that equals or is better than the best in Europe. (Joint Health Improvement Plan &amp; HEAT targets).</b>	<b>Life expectancy at birth.</b>  (To be reported through communities of place and interest).	Annual / National Menu / NHS Grampian.	74.9 Male 80.1 Female	tbc tbc

National Outcome	Local Outcome	Relevant Indicators	Frequency / Type / Source	Baseline 2006-07	Local Targets & Timescales
		<b>Mental health admissions.</b>	Annual / National Menu / NHS Grampian.	<u>First Admission</u> 269  <u>Re-Admission</u> 601	tbc  tbc
		<b>Number of suicides.</b>  Suicide and self-harm rates among 10-24 year olds has reduced.	Annual / National Menu / NHS Grampian.	General Register for Scotland for 2006 = 29	National Choose Life target to reduce suicide during the period 2003 – 2013 by 20%
		<b>Annual rate of increase of daily defined dose per capita of anti-depressants.</b>	Annual / National Menu / NHS Grampian.	March 2007 26.2 NHS Grampian	zero by 2009-10
	<b>6.2 Tackle substance misuse including drugs and alcohol. (VD&amp;FL).</b>	<b>Number of screenings using the setting-appropriate screening tool and appropriate alcohol brief intervention, in line with SIGN 74 guidelines.</b>	Annual / NES JPSG CSF / NHS Grampian.	tbc	8,496 by 2010-11 (Grampian)

National Outcome	Local Outcome	Relevant Indicators	Frequency / Type / Source	Baseline 2006-07	Local Targets & Timescales
		<b>Deaths per 100,000 population by alcohol related diseases.</b>	Annual / National Menu / NHS Grampian.	32.5 male 10.3 female (Grampian 2005)	tbc
		<b>The level and frequency of alcohol consumption has reduced among children and young people under 25.</b>	To be developed and / or counted for the new 2009-12 Integrated Children's Services Plan.		
		<b>New people seeking care/treatment for drug dependency .</b>	Annual / NES JPSG CSF / NHS Grampian	tbc	8% over the period 2008-9 – 2010-11
		<b>The percentage of children and young people under 25 who are involved in substance misuse has reduced.</b>	To be developed and / or counted for the new 2009-12 Integrated Children's Services Plan.		
	<b>6.3 Sustain long term change by focusing on the prevention of, or reduction in, health inequalities. (Joint Health Improvement Plan).</b>	<b>Smoking population successfully quitting (at one month post quit).</b>	Annual / VD&FL CSF / NHS Grampian (HEAT Measure).	773 (Grampian)	8,120 by 2010 (Grampian) (City figure to be developed)

National Outcome	Local Outcome	Relevant Indicators	Frequency / Type / Source	Baseline 2006-07	Local Targets & Timescales
		By 2022, 80% of children meet the minimum recommended level of physical activity.	To be developed and / or counted for the new 2009-12 Integrated Children's Services Plan.		
		<b>The percentage of school children who a) say they enjoy the cultural, learning and sporting activities they take part in and b) think there are sufficient opportunities to access these activities has increased.</b>	To be developed and / or counted for the new 2009-12 Integrated Children's Services Plan.		
		<b>The percentage of parents of 0-5 year olds satisfied with access to outside play space has increased.</b>	To be developed and / or counted for the new 2009-12 Integrated Children's Services Plan.		
		<b>The percentage of young people who agree that there are good opportunities to participate in recreation activities has increased.</b>	To be developed and / or counted for the new 2009-12 Integrated Children's Services Plan.		

National Outcome	Local Outcome	Relevant Indicators	Frequency / Type / Source	Baseline 2006-07	Local Targets & Timescales
		<b>The percentage of those aged 17-24 who take part in sport more than twice a week.</b>	To be developed and / or counted for the new 2009-12 Integrated Children's Services Plan.		
		Percentage of the local population taking part in physical activities.  (will need some breakdown as above)	Bi-annual/Local Menu/Aberdeen City Council.	64%	Develop overall participation year on year to reach an increase of 10% by 2015
		Attendances per thousand of population within Council sports facilities.  (will need some breakdown as above)	Annual / National Menu / Aberdeen City Council	7,636	To be assessed annually with a view to consistently achieving SPI national upper quartile status

## Required Actions / Commitment by local partners to achieve these outcomes:

1. Promote the health and wellbeing of pupils through healthy eating and exercise, including a daily free nutritious meal for every pupil and regular access to swimming (VD&FL).
2. Delivery of both the Local and Regional Transport Strategy commitments of Walking and Cycling, Active Travel, Improving Safety, promoting and increasing travel safety and security and supporting extension of low speed zones provide safety benefits, whilst promoting active travel can help achieve health benefits from a young age.
3. Encourage walking and cycling in our city, including introducing more safe routes for cyclists and introducing more mandatory 20mph speed limits in residential areas (VD&FL).
4. We will adopt a family focused approach to child healthy weight interventions.
5. Improve joint working between the NHS and Council, especially in relation to the delivery of services in mental health and wellbeing, learning disability (VD&FL).
6. All secondary schools will be involved in the delivery of the HPV vaccination programme targeting population all S2 and above female pupils.
7. Key actions/activities to reduce teenage pregnancy in Aberdeen City:

\* Delivery of 'Baby Think It Over' programme targeted at secondary school pupils. It aims to explore the social issues and responsibilities relating to teenage pregnancy and young parenthood by using realistic infant simulators alongside a six week educational programme.

\* Provision of a range of advice and support regarding sexual health activity to schools throughout the City via the School Nursing Service and the Health Promoting Schools accreditation scheme.

\* Delivery of SHARE (Sexual Health and Relationship Education). SHARE is an evidence based training programme delivered by a multi-agency team.

8. Campaign with other local authorities to persuade COSLA and the Scottish Government to secure a fair funding system for social care services (VD&FL);
9. Adopt and implement strategies to involve and support service users and unpaid carers in developing appropriate service provision (VD&FL);
10. Build on the Council's participation in "Healthy Working Lives" and in particular implement mental health and wellbeing policies within the Council and promote such policies within the wider community (VD&FL);
11. Ensure that there are clear contracts and service level agreements with partner providers (VD&FL);
12. Increase participation in sport, provide support for athletes and reward excellence (VD&FL);
13. Ensure Healthy Living Networks deliver services to address the socio-economic determinants of health;
14. Ensure learning programmes and activities include opportunities to address health issues;

15. Ensure high quality, well managed sports facilities in Aberdeen (VD&FL);
16. Implement Healthwise Project (NHS Grampian);
17. Delivery of both the Local and Regional Transport Strategy commitments for Promoting Active Travel, Improving Safety, Walking and Cycling.
18. Grampian Police will continue to provide a substance misuse co-ordinator to work alongside partner agencies involved with Health, Education and Social Welfare in raising awareness of substance misuse and the impact which this has on our communities (GP).
19. Enforce mandatory drug testing of people arrested for certain offences and ensuring that individuals have the opportunity of an assessment with a drugs assessor with a view of getting them into treatment (GP).
20. Grampian Police and NHS Grampian to work in partnership on the development of data sharing on alcohol related admissions which may identify victims of domestic violence or children/families at risk (GP).
21. Fully support the Joint Alcohol and Drugs Action Team (JADAT), a multi-agency partnership working together to lead and co-ordinate the prevention and reduction of problems associated with drugs and alcohol (GP).

**This section will be further developed in the new 2009-12 Integrated Children's Services Plan.**

## Safer and Stronger

All Local Outcomes and Indicators highlighted in **red** are linked directly to the Single Outcome Agreement.

All Local Outcomes and Indicators highlighted in **bold** are linked to the Quality Improvement Framework.

Please note that any expenditure relating to the implementation of this Plan will be met from within existing ACC budget levels. Additional expenditure in relation to the implementation of this Plan will require formal approval and further reports to Committee.

<u>National Priorities</u>	<u>Strategic Priorities for the City</u>
<ul style="list-style-type: none"><li>• Getting it Right for Every Child</li><li>• Early Years and Early Intervention</li><li>• Looked After Children: We Can and Must Do Better</li><li>• Getting it Right for Every Child in Kinship and Foster Care</li><li>• Adoption and Children (Scotland) Act 2007</li><li>• Getting our Priorities Right</li><li>• Youth Justice Strategy</li><li>• National Domestic Abuse Delivery Plan for Children and Young People</li></ul>	<ul style="list-style-type: none"><li>• Getting it Right for Every Child</li><li>• Children – Healthy minds and bodies</li><li>• Violence and Disorder – Reducing antisocial behaviour, violence, domestic abuse, racist incidents and drug/alcohol related</li><li>• The continued development of Neighbourhood Planning to deliver quality of life improvements at the local level.</li><li>• Regeneration – Improving the quality of life in our most deprived areas</li></ul>

National Outcome	Local Outcome	Relevant Indicators	Frequency / Type / Source	Baseline 2006-07	Local Targets & Timescales
8. We have improved the life chances for children, young people and families at risk.	<b>8.1 Young people and families at risk are supported to stay together.</b>	<b>Vulnerable children looked after at home, in foster care, in residential care.</b>	Annual / Local / Aberdeen City Council.	Home 154 Foster 207 Resid 89	18 new adopters  25 new full-time foster carers  10% reduction in external placements.  (2008-09)

National Outcome	Local Outcome	Relevant Indicators	Frequency / Type / Source	Baseline 2006-07	Local Targets & Timescales
		<b>Families supported through Aberdeen Families Project which result in complete cessation or significant reduction in antisocial behaviour.</b>	Annual / Local / Aberdeen City Council.	80%	80% (2008/09)
	<b>8.2 Children and young people are protected from abuse, neglect and harm by others at home, at school and in the community. (SAFE)</b>	<b>The Percentage of child protection referrals that are repeat referrals within 12 months of initial referral or removal from the register, has reduced.</b>	Aberdeen City Council	tbc	tbc
		Implement the recommendations of the 'Getting our Priorities Right' report to improve the welfare and safety of children who are living with parents and other adults who are using drugs and alcohol.	Aberdeen City Council / JADAT	tbc	tbc

National Outcome	Local Outcome	Relevant Indicators	Frequency / Type / Source	Baseline 2006-07	Local Targets & Timescales
		Establishment of a Shadow Adult Protection Committee and development of links with the North East Scotland Child Protection Committee.	Aberdeen City Council / NESCP	N/A	N/A
		<b>The proportion of recorded incidents of bullying reported to be resolved satisfactorily by pupils and by school management has increased.</b>	Aberdeen City Council	tbc	tbc
	<b>8.3 Children and young people live within a supportive family setting. They receive additional assistance if and when required. Where this is not possible, they live</b>	<b>All requests, from any appropriate agency, under the Additional Support for Learning Act, are answered within 10 weeks (16 if an extension is agreed) by the relevant agency.</b>	To be developed and / or counted for the new 2009-12 Integrated Children's Services Plan.		

National Outcome	Local Outcome	Relevant Indicators	Frequency / Type / Source	Baseline 2006-07	Local Targets & Timescales
	<b>within another care setting, ensuring a positive and rewarding childhood experience. (NURTURED)</b>	Every child that goes to a hearing has a comprehensive assessment based on the Assessment Triangle and a SMART Action Plan.	To be developed and / or counted for the new 2009-12 Integrated Children's Services Plan.		

National Outcome	Local Outcome	Relevant Indicators	Frequency / Type / Source	Baseline 2006-07	Local Targets & Timescales
		<b>All children and young people who need it have an integrated package of appropriate health, care and educational support.</b>	To be developed and / or counted for the new 2009-12 Integrated Children's Services Plan.		
		<b>The number of homeless or temporarily accommodated children and young people has reduced.</b>	To be developed and / or counted for the new 2009-12 Integrated Children's Services Plan.		
		<b>Sufficient, appropriate respite services are available for children with disabilities when they need them.</b>	To be developed and / or counted for the new 2009-12 Integrated Children's Services Plan.		
		<b>Family support and relationship services are available for parents and families who may need these.</b>	To be developed and / or counted for the new 2009-12 Integrated Children's Services Plan.		

National Outcome	Local Outcome	Relevant Indicators	Frequency / Type / Source	Baseline 2006-07	Local Targets & Timescales
		<p><b>The number of accommodated children with three or more placements has reduced.</b></p>	<p>To be counted for the new 2009-12 Integrated Children's Services Plan.</p>		
		<p><b>The percentage of children a) under 5 placed in an adoptive family or a permanent substitute family within 12 months of being accommodated away from home; and b) 5 or over placed in an adoptive family or a permanent substitute family within 24 months of being accommodated away from home has increased.</b></p>	<p>To be counted for the new 2009-12 Integrated Children's Services Plan.</p>		
		<p><b>The percentage of looked after young people leaving care who have a pathway plan has increased.</b></p>	<p>To be developed and / or counted for the new 2009-12 Integrated Children's Services Plan.</p>		

National Outcome	Local Outcome	Relevant Indicators	Frequency / Type / Source	Baseline 2006-07	Local Targets & Timescales
		<p><b>The number of young people leaving care and secure accommodation who sustain a tenancy for more than 6 months has increased.</b></p>	<p>To be developed and / or counted for the new 2009-12 Integrated Children's Services Plan.</p>		
		<p><b>Appropriate support services are available for children and young people affected by domestic abuse.</b></p>	<p>To be counted for the new 2009-12 Integrated Children's Services Plan.</p>		

National Outcome	Local Outcome	Relevant Indicators	Frequency / Type / Source	Baseline 2006-07	Local Targets & Timescales
	<b>8.4 Improve the life chances of Looked After Children.</b>	<b>Percentage of Looked After Children attaining at least 1 Standard Grade or SG English &amp; Maths or at least 1 SCQF Level 3 or SCQF Level 3 English &amp; Maths.</b>	Annual / SPI / Aberdeen City Council.	<u>At least 1 Standard Grade</u> tbc  <u>Standard Grade English &amp; Maths</u> tbc  <u>At least 1 SCQF Level 3</u> 48.6%  <u>SCQF Level 3 English &amp; Maths</u> 20.0%	2007-08 52.1% 2008-09 65.2% 2009-10 81.5%  2007-08 39.1% 2008-09 48.9% 2009-10 61.1%  2007-08 58.7% 2008-09 69.1% 2009-10 81.2%  2007-08 52.1% 2008-09 61.3% 2009-10 72.2%
		<b>% of young people (15 – 19) leaving care Not in Education, Employment or Training.</b>	Annual / Local / Aberdeen City Council.	82%	Year on year reduction of 5%
<b>9. We live our lives safe from crime, disorder and danger.</b>	<b>9.1 Reduce anti-social behaviour, violence, domestic abuse, racist incidents and drug / alcohol related incidents (Community Plan).</b>	<b>The percentage of respondents who feel very safe or safe walking alone in the neighbourhood after dark within regeneration areas.</b>	2 years / Aberdeen City Council / Local Survey.	50.2%	70% over 5 years

National Outcome	Local Outcome	Relevant Indicators	Frequency / Type / Source	Baseline 2006-07	Local Targets & Timescales
		<b>The number of young people who have expressed a fear of crime, has reduced.</b>	To be developed and / or counted for the new 2009-12 Integrated Children's Services Plan.		
		<b>No. of persistent young offenders per 10,000 relevant population.</b>	6 monthly / Reporter to the Childrens Panel / Youth Justice Strategy Group.	61	Reduce
		<b>The number of violent crimes, including sexual crimes.</b>	Annual / Grampian Police (NI).	540	496 (2007-08)
		<b>Number of domestic abuse incidents per 100,000</b>	Annual / Grampian Police (NI).	900	Reduce
		<b>The number of wilful fires.</b>	Annual / Local / GFRS	1117	A year on year Reduction
	<b>Reduce the risks to health and wellbeing of our communities from injuries due to preventable accidents</b> We may need a breakdown for child injuries / fatalities	<b>The number of persons killed or injured in road accidents.</b>	Annual / NES JPSG CSF / Grampian Police (NI).	Fatal 6 Serious 67 Slight 400 (Provisional)	5 51 368 (2007-08)
		<b>The number of accidental dwelling house fires.</b>	Annual/ Local / GFRS.	388	A year on year reduction
		<b>The number of fire related injuries.</b>	Annual/ Local / GRFS.	76	A year on year reduction

National Outcome	Local Outcome	Relevant Indicators	Frequency / Type / Source	Baseline 2006-07	Local Targets & Timescales
	in road traffic accidents / all other accidents (as per JHIP)	<b>Rate per 100,000 of injuries due to preventable accidents requiring emergency hospital admission.</b>	Annual / Local / RosPA stats.	<u>Under 5s</u> Home 1677 RTA 30 Other 824 Total 2531  <u>Over 65</u> Home 1316 RTA 99 Other 1066 Total 2481	To be set as part of development of local joint strategy
<b>11. We have strong, resilient and supportive communities where people take responsibility for their own actions and how they affect others.</b>	<b>11.1 Every citizen is enabled to be more active in his or her community regardless of their age, gender, sexual orientation, ethnic origin, where they live or disability to ensure everyone can contribute to 'active citizenship' (Strengthening Local Democracy Strategy).</b>	<b>% aware of their Neighbourhood's Community Action Plan.</b>	Annual / Citizens Panel / Aberdeen City Council.	43%	08 – 45% 09 – 50% 10 – 55%
		<b>% aware of being asked for their views.</b>	Annual / Local / Citizens Panel.	41%	08 – 45% 09 – 50% 10 – 55%
		<b>% who feel they can influence what happens in their neighbourhood.</b>	Annual / Local / Citizens Panel.	n/a	10% by 2009 20% by 2010 40% by 2011 60% by 2012

## Required Actions / Commitment by local partners to achieve these outcomes:

1. Support the actions of the North East of Scotland Child Protection Committee (NESCPC) recognising that to properly safeguard and support children and young people, agencies need to embrace joint working to ensure a collaborative approach (GP).
2. Agree, with HMIE, and implement improvement actions following inspection of Child Protection arrangements (ACC).
3. Partner agencies to continue to engage in Child Protection at various levels, and work together to help children whose lives are affected by parents who abuse alcohol and/or drugs (GP).
4. Grampian Police will continue to promote joint agencies initiatives such as 'Global Rock' a performing arts project the theme of which is to deliver healthy lifestyle messages opposing drugs, alcohol, smoking and anti-social behaviour to young people through music and dance (GP).
5. Allocate additional resources to support for learning, targeted to areas of greatest need (VD&FL).
6. Continue work to raise the achievement of vulnerable children and close the attainment gap across the City (VD&FL).
7. Make greater provision within the City for young people with additional needs to avoid placements out of the area (VD&FL).
8. Increase number of foster carers (VD&FL).
9. Increase the safety of, and reduce the number of, young people accommodated in residential units, residential school and foster care in Aberdeen who run away through the Young Runaways Service (GP).
10. Continue to monitor, support and develop the Aberdeen Families project (VD&FL).
11. Strive to increase the number of foster carers in our City and so reduce the number of young people in care homes (VD&FL).
12. Ensure that Single Plans meet Getting it Right For Every Child (GIRFEC) requirements.
13. Facilitate joint working between the police, social services and schools to try and prevent young offenders becoming persistent offenders (VD&FL)
14. Continue joint working through the Community Safety Partnership to tackle crime, antisocial behaviour, domestic abuse, etc.
- 15.
16. Through the Youth Justice Management Unit (YJMU), continue commitment to reduce youth offending and promote community safety through effective monitoring and targeted intervention.
17. Enhancing the work of the Aberdeen Youth Offender Review Group (YORG) (GP).
18. Grampian Police are committed to providing School Liaison Officers and/or School Based Officers for all primary and secondary schools in Aberdeen City. These officers provide valuable inputs for young people on a wide range of issues utilising 'learning for life' and other educational resource tools which helps facilitate their development and awareness of personal and social issues (GP).
19. Continue commitment to identifying and engaging with young people who are starting to participate with anti-social behaviour. Through Grampian Police's Early Intervention Worker, promote the value of the acceptable behaviour contract and the benefits of multi-agency working, early intervention, diversion, prevention and joint problem solving; (GP);
20. Continue to support youth development and diversion schemes, such as participation in outward bound courses under the initiative 'Operation Youth Advantage'; engagement with the Princes Trust; youth distraction sporting activities such as 'five a side' football; (GP).

21. Grampian Police through their Anti-Social Behaviour Unit are committed to identifying and engaging with young people who are starting to participate with anti-social behaviour with the overall aim of reducing anti-social behaviour and the likelihood of those persons becoming actively involved in more serious crime (GP)
22. Through their Family Protection Unit (FPU) Grampian Police will continue to investigate complex or serious sexual and physical abuse of children, historical abuse of adults and abuse of vulnerable adults. The Joint Child Protection Unit is co-located within the FPU, demonstrating the commitment for 'Getting It Right For Every Child' (GIRFEC) (GP);
23. Through the Youth Justice Management Unit, Grampian Police will continue to refer young persons who may benefit to SACRO for their Mediation within Residential Units (MRU) initiative. This scheme provides vulnerable young people an opportunity to desist from becoming active in crime (GP).
24. Engage with young people to reduce anti-social behaviour including malicious calls (GF&RS).
25. Continue commitment to reducing youth related anti-social behaviour and underage drinking by utilising the services of 'test purchase officers' to address the issue of licensed premises persistently selling alcohol to under aged young people (GP).
26. Develop joint working on accidental injury prevention, including the provision of robust local health data on injuries requiring health treatment, to allow measurement and targeting of effective interventions. Joint strategy to be developed in 2008/09.
27. Build local community capacity through community development and CLD.
28. Full implementation of the local Framework for Neighbourhood Planning & Service Delivery.

**This section will be further developed in the new 2009-12 Integrated Children's Services Plan.**



## **9. Monitoring and Evaluation**

Progress in relation to our local outcomes will be monitored via the Indicators in the Performance Management Framework and Single Outcome Agreement. These measure improved outcomes for children and young people. Many of these are taken from existing national and local frameworks that agencies represented on the Aberdeen's Children and Young People's Strategic Planning Group are already working with. Others will need to be developed during 2008-09.

Progress will also be monitored through Aberdeen City Council's Citistat process and an electronic version of the Integrated Children's Services Plan will enable us to better monitor and track progress throughout the year.

The work will also contribute towards relevant national outcomes and indicators outlined in the Concordat.



## Appendix 1      Key Policy Documents

### National

- Children (Scotland) Act 1995
- Additional Support for Learning (Scotland) Act
- Adoption and Children (Scotland) Act 2007
- Changing Lives: the 21<sup>st</sup> Century Social Work Review
- Child Protection Reform Programme
- Curriculum for Excellence
- Early Years and Early Intervention
- Equally Well
- Getting it Right for Every Child
- Getting it Right for Every Child in Kinship and Foster Care
- Getting Our Priorities Right
- Health for all Children (Hall4)
- It's Everyone's Job to Make Sure I'm Alright
- Looked After Children and Young People: We Can and Must Do Better
- More Choices, More Chances
- National Care Standards
- National Domestic Abuse Delivery Plan for Children and Young People
- Preventing Offending by Young People: A Framework for Action
- The Same as You
- We Can and Must Do Better

### Local

- Community Plan / Single Outcome Agreement 2008-11
- A Strategy for Transforming Services to Children and Young People – 2007 to 2010
- Aberdeen City Council Corporate Plan
- Aberdeen City Council Corporate Parenting Policy
- Aberdeen City Council Disability Equality Scheme 2006-09
- Aberdeen City Council 'Fit for the Future' Sport and Physical Activity Strategy (in draft)
- Aberdeen City Council Gender Equality Scheme 2007-10
- Aberdeen City Council Race Equality Scheme 2005-08
- Community Learning and Development Strategy
- Joint Health Improvement Plan
- LAC Education Action Plan
- Neighbourhood Community Action Plans (37)
- North East Scotland Child Protection Committee Annual Report and Business Plan
- Youth Justice Strategy



## **Appendix 2      List of Consultees**

The following people and services have been consulted:

Members of Aberdeen's Children and Young People's Strategic Planning Group  
Chief Executive, Aberdeen City Council  
Corporate Directors, Aberdeen City Council  
Heads of Service, Aberdeen City Council  
Members of Aberdeen's Children and Young People's Services Management Group  
Members of Integrated Children's Services Local Planning Group  
Aberlour Childcare Trust  
Aberdeen City Alliance  
Aberdeen Council of Voluntary Organisations  
Aberdeen Community Safety Partnership  
Aberdeen Domestic Abuse Partnership  
Aberdeen Early Years and Childcare Partnership  
Aberdeen's Healthy Living Network  
Accessibility Strategy Officer  
Active Schools Manager  
Barnardos  
Careers Scotland  
Changing Children's Services Change Managers  
Children 1st  
Children's Services Development Workers  
Children's Services Manager – Adoption and Fostering  
Community Learning and Development Manager, Officers and Team Leaders  
Development Officer (Age Equalities / International)  
Dialogue Youth  
Family Information Service  
Grampian Police  
Grampian Racial Equality Council  
Joint Alcohol and Drugs Action Team (JADAT)  
Learning Reference Group  
Looked After Children (LAC) Strategy Group  
Neighbourhood Community Planning Officers  
North East Scotland Child Protection Committee (NESCPC)  
NHS Grampian  
Safer Communities Reducing Offending (SACRO)  
Senior Research Officer  
Service Managers – Schools and Children's Services  
Sport and Recreation Officer  
Strategist (Arts, Culture, Heritage and Sport)  
Strategists – Strategic Leadership  
Team Managers – Children's Services  
VSA  
Youth Action Committee (YAC)

